

Solid State Pressure Sensor



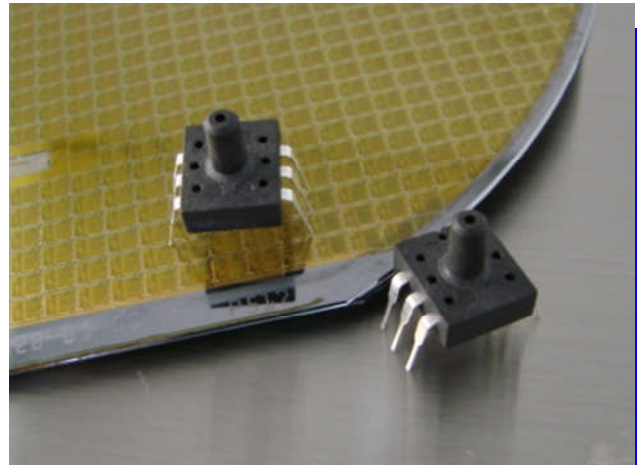
SLP Series - Model 33A Low Pressure

FEATURES

- Easy Design-in
- Temperature Compensated
- Calibrated & Amplified Output
- Low Cost

APPLICATIONS

- Process Control
- HVAC
- Consumer Electronics
- Medical Devices



DESCRIPTION

The SLP 33A Series incorporates a silicon piezoresistive pressure sensor and signal conditioning ASIC in a 6-pin DIL plastic housing for easy through hole board assembly. A surface mount version is also available. It provides a temperature compensated, calibrated pressure solution for high volume applications at an affordable cost.

Pressure ranges are available from 0.3 to 100 psig. Ratiometric output at 5V excitation is 0.5 to 4.5 V. Pressure connection is through Tygon tube on the pressure port.

Custom calibrations are available please contact the factory for details.

Characteristics

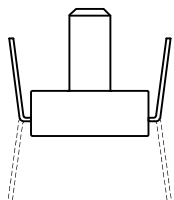
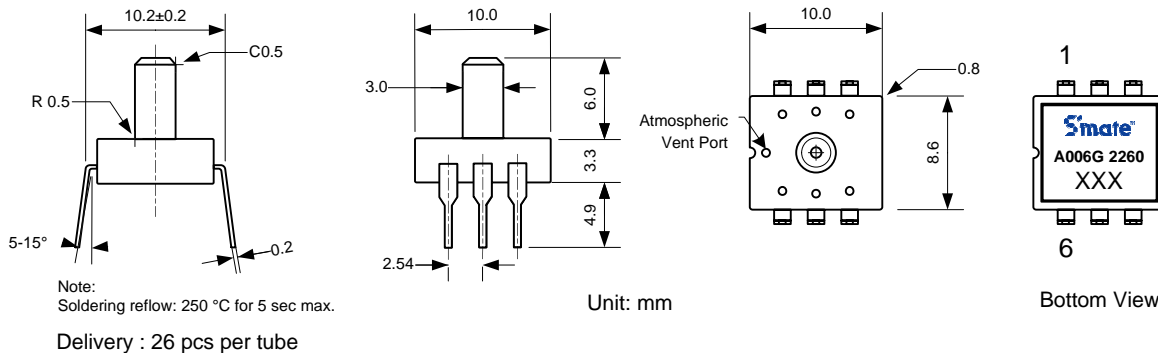
Unless otherwise specified, all parameters are measured at 5V excitation, 25 °C and 60% RH

Parameters	Min	Typ	Max	Unit
Supply Voltage ^{Note 3}	2.7 to 3.3		4.5 to 5.5	Vdc
Supply Current			2.5	mA
Pressure Range ^{Note 4}	0.3		3	psi
Offset	0.320	0.500	0.680	Vdc
Span Output		4.000		Vdc
Output Current of Buffer			2.2	mA
Accuracy ^{NOTE1}			4.5	%FS
Accuracy(Auto-zero) ^{NOTE1}			2.5	%FS
Over Pressure ^{NOTE 5}			3X or 2.5 psi	Rated Pressure
Response Time		1	2	ms
Temp - Compensated	0		50	°C
Temp - Operating	-20		+85	°C
Temp - Storage	-40		+125	°C

Notes:

1. Accuracy includes non-linearity, hysteresis, TCS, TCO inside the compensated temperature range, Best Fit Straight Line definition
2. Wetted material contains RTV, PPA, glass and silicon
3. Specify desired operating voltage range when ordering. Output is Ratiometric to supply Voltage
4. See ordering guide for list of available pressure ranges
5. Whichever is higher

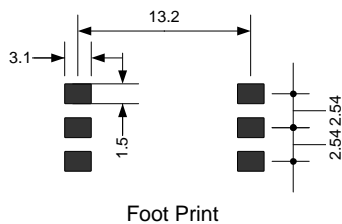
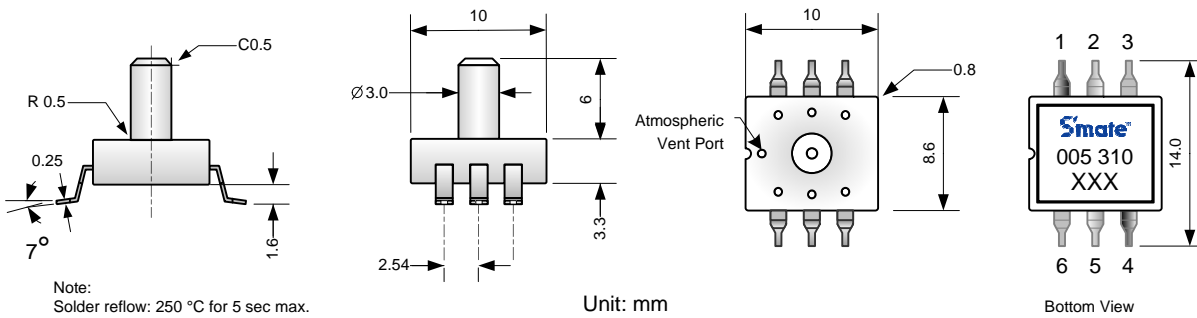
Dimensions



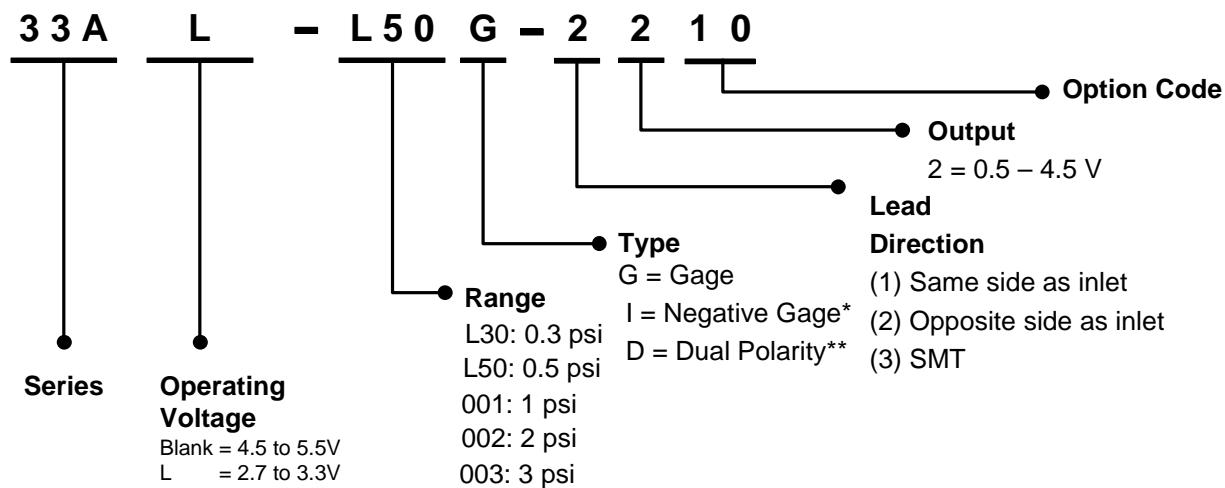
(1)
(2)

Pin #	Description
1	N.C.
2	VDD/N.C.*
3	VSS
4	VDD
5	OUT
6	VSS/N.C.*

NOTE:
Pin 1 must be left floating.
A 0.1uF capacitor must be connected between Vdd and Vss
*For the 2, 3, 5 & 7 psi range, Pins 2 & 4 and Pins 3 & 6 must be shorted. Pins 2 and 6 must be N.C when using other ranges.



Ordering Information



* Negative Gage Output has -XXX psi as the Full Scale output (4.5V) and 0 psi as the Offset (0.5V). Max. pressure is -15 psi

** Dual Polarity has +XXX psi as the Full Scale Output and -XXX psi as the Offset. Max. pressure is 30 psi

SENSORMATE

10, Industries E. Rd. III, Lukang,
Chang Hua, Taiwan 50544
Tel: +8864 7811839 Fax: +8864 7811837
www.sensormateonline.com

Ver 1.7 4 Nov 10